

# ISOSOL

PRE-INSULATED PIPES

The modern solution forwards time and money savings

ENERGY SAVING  
over  
**60%**



CE

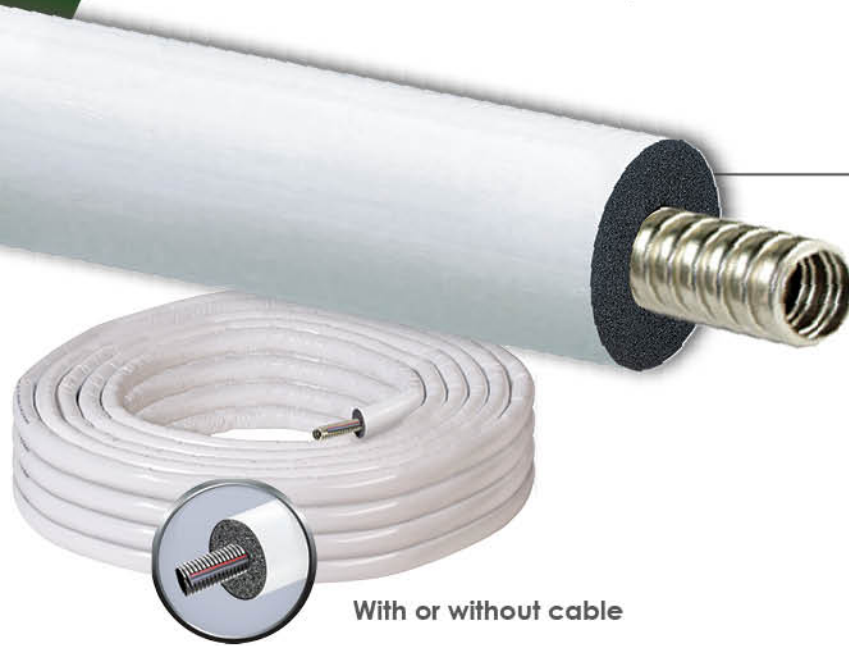


Integrated  
Insulation Systems

[www.isopipe.eu](http://www.isopipe.eu)

## ISOSOL makes life easier!

The high quality and wide range of our bare pipes in combination with ISOPIPE S.A.'s expertise in closed-cell synthetic rubber elastomeric foam, offer an ergonomic and highly functional product, **ISOSOL Pre - Insulated Pipes**.



### ISOSOL Benefits

- Lightweight, resistant and flexible.
- Easy to transport and install in any industrial or domestic application.
- Meets all the standards for sustainable construction.
- It is marked at meter intervals enabling the technician to cut and use the exact amount of material needed.
- It helps in saving time to every professional during installation.
- It makes installation easier, as there is no need to measure, cut, join and glue.
- Available with **ISOPIPE TC (+110°C)** or **ISOPIPE HT-HF (+175°C)** Insulation and our **SOLAR protective Covering in White Colour**.

### Applications

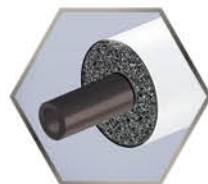
**TC HT-HF**  
**SOLAR\***



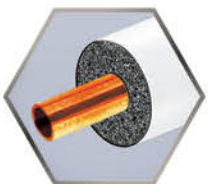
**INOX**  
DN 12 - DN 25



**PERT-AL-PERT**  
16 mm - 26 mm



**PE**  
15 mm - 22 mm



**Copper**  
1/4" - 3/4"  
6 mm - 22 mm



### A wide range of applications



Heating



Plumbing



Air  
Conditioning



Refrigeration



Solar  
Energy



Steam

\* SOLAR Covering is available in White colour.

For more information please refer to ISOPIPE TC, ISOPIPE HT-HF & SOLAR COVERING Brochures.

**NOW**  
we pre-insulate  
any kind of pipe  
you ask us to!

## Now available in ISOSOL TWIN!

ISOSOL TWIN is now available with a new design offering quick and easy application.

The connection of the tubes is performed with a special protective film, which allows easy separation at the desired length.

### ISOSOL TWIN Benefits

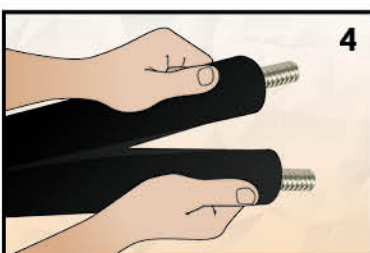
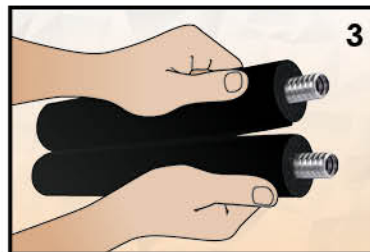
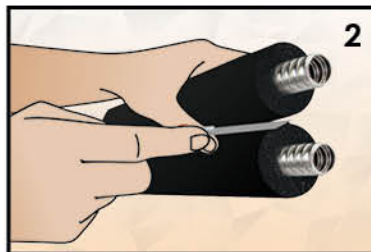
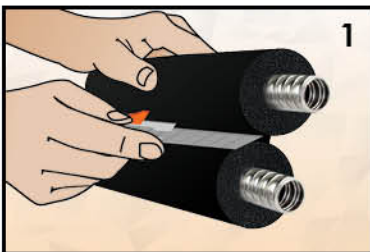
- High temperature elastomeric insulation provided in two connected tubes.
- **Fast and easy connection/ installation.**
- **Specially designed to minimize heat loss**, while having high resistance to chemicals and atmospheric agents.
- Available with **ISOPIPE TC (+110°C)** or **ISOPIPE HT-HF (+175°C)** Insulation and our **SOLAR protective Covering in Black Colour.**



With or without cable

**ENERGY SAVING**  
over  
**60%**  
CE Covers European and  
International Regulations

## Instructions for ISOSOL TWIN INOX



**1-2.** Using a small knife, cut the thinner part, exactly in the middle of the film, between the tubes, approximately 2 cm (see pictures 1 and 2).

**3-4.** With your hands split the tubes until the desired length (see pictures 3 and 4).

At the point we need to put an end either at the beginning or at the end, of the bobbin, a tape should be inserted, in order to prevent the tube from separating.

## New User Friendly App for Tablet & Mobile Devices

ISOPIPE Insulation Calculator has been developed to offer exact measurements for Certified Insulation, NBR and EPDM based.

Through the Program's Calculations the user receives many recommendations, but also the techno-economic choice towards energy savings.

### ISOPIPE Insulation Calculator Highlights:

- ✓ The app **works Offline**, online use while sending the PDF file
- ✓ **Save** the **Calculation** inside the Program
- ✓ More than **2000** Calculations can be Saved and seen any time
- ✓ **Send** the Calculation in any **Email** address in PDF form
- ✓ **Send** Multiple Saved Calculations in a **Single PDF** file
- ✓ **Translated** in **8 languages**
- ✓ **Download** it for **free** in *Apple Store* & *Google Play Store*

# ISOPIPE® Insulation Calculator



## Company's Profile

ISOPIPE S.A. is a leader in the field of insulation and heating. Its industrial unit is one of three worldwide specializing in vertical production of elastomeric insulation.

ISOPIPE S.A. was founded in 1997. In 2008 the company completed a large investment by obtaining the know-how of TORRENT, the Greek market leader in cast iron boilers. In 2009, the company expanded with the establishment of its subsidiary Iberica sl in Barcelona, Spain.

ISOPIPE S.A. factory is located 73km north of Athens, with a covered area of 60,000 m<sup>2</sup> and buildings of 30,000 m<sup>2</sup>.

Our quality system is EN ISO 9001:2015 certified, while our production program, as well as the quality and properties of all our ISOPIPE products, are based on EN 14304.

Please, watch our video for more information.



# ISOPIPE® S.A.

**Rebuild the future!**

[www.isopipe.eu](http://www.isopipe.eu)

#### GREECE

##### Head Office:

Nafpliou & Daskalogianni  
144 52 Metamorfofi Attikis  
T.: +30 210 28 28 603  
F.: +30 210 28 19 210  
E.: export@isopipe.gr

##### Plant:

73rd km Nat. Road Athens - Lamia  
341 00 Ritsona Halkida  
T.: +30 22620 89 800  
F.: +30 22620 72 006  
E.: export@isopipe.gr

#### SPAIN

##### Barcelona:

C/ Costa i Deu 71 - 79 (esq. C/ Tamarit)  
08205, Sabadell, Barcelona, España

##### Madrid:

Calle Pedro Duque, 5,  
Polígono Industrial GITESA,  
28.814- Daganzo de Arriba (Madrid),  
Madrid Community

T.: +34 93 879 1195  
F.: +34 93 879 1313  
E.: pedidos@isopipe.es

#### UNITED KINGDOM

##### Head Office:

178 Seven Sisters Road  
London N7 7PX  
United Kingdom

##### Warehouse:

Airfield Industrial Estate Warboys, Huntingdon  
Cambridgeshire PE28 2SH  
United Kingdom

T.: +44 (0) 208 299 9545  
E.: orders@isopipe.eu